

Kodak



PDFKIWI

i9600 Application Software

User's Guide

EASTMAN KODAK COMPANY SOFTWARE LICENSE AGREEMENT

Read the following terms and conditions carefully before using the enclosed software. Use of the software within this package indicates your acceptance of these terms and conditions. If you do not agree with them, you should promptly return the package in its entirety and your money will be refunded.

License

1. **Grant of License.** Eastman Kodak Company ("Kodak") grants you a license to use one copy of the enclosed software program(s) (the "Software") subject to the license restrictions set forth below.
2. **Restrictions on Use.** You may use the software only on one computer at a time. For each additional computer on which the Software is running at the same time, you will need an additional licensed copy of the software. You may copy the Software as necessary to use the Software as described above.
3. **Transfer of the Software.** You may permanently transfer the Software to another party if the other party agrees to accept the terms and conditions of this license and you retain no copies of the Software.
4. **Copyright.** The Software is owned by Kodak or its suppliers and protected by copyright laws and International treaties. You may not copy the Software other than as expressly provided in this license. You may not reverse engineer, decompile, or disassemble the Software.
5. **Term.** This license is effective until terminated. You may terminate it at any time by destroying the Software together with all copies in any form. It will also terminate if you fail to comply with any term or condition of this Agreement. You agree upon such termination to destroy the Software together with all copies in any form.

Limited Warranty

As evidenced by a copy of your purchase receipt, Kodak warrants (i) the Software will perform substantially in accordance with the accompanying written materials, and (ii) the media on which the Software is furnished will be free from defects in materials and workmanship under normal use.

Kodak does not warrant that the functions contained in the Software will meet your requirements or that the operation of the Software will be uninterrupted or error free. You assume responsibility for operation of the Software to achieve your intended results, and for installation, use, and results obtained from the Software.

KODAK MAKES NO OTHER WARRANTIES OF ANY KIND, EITHER EXPRESS OR IMPLIED, INCLUDING THE IMPLIED WARRANTIES OF MERCHANTABILITY AND FITNESS FOR A PARTICULAR PURPOSE. Some states and countries do not allow the exclusion of implied warranties, so the above exclusion may not apply to you. This warranty gives you specific legal rights and you may also have other rights.

Limitations of Remedies

Kodak's entire liability and your exclusive remedy shall be, at Kodak's option either (a) the repair or replacement of the Software or any media not meeting Kodak's "Limited Warranty" that is returned to Kodak or your dealer with a copy of your receipt, or (b) the return of the price you paid for the Software, provided you have proof of the purchase price you paid. These remedies are not available if the failure of the Software or media is the result of misuse, abuse, or a failure to follow the operating instructions in the accompanying written materials.

IN NO EVENT WILL KODAK OR ITS SUPPLIERS OR DEALERS BE LIABLE TO YOU FOR ANY INCIDENTAL OR CONSEQUENTIAL DAMAGES, INCLUDING ANY LOST PROFITS, LOST SAVINGS, OR OTHER DAMAGES ARISING OUT OF THE USE OR INABILITY TO USE THE SOFTWARE EVEN IF ADVISED OF THE POSSIBILITY OF SUCH DAMAGES. Some states and countries do not allow the limitation or exclusion of liability for incidental or consequential damages, so the above limitation may not apply to you.

General

If the Software was purchased in the United States, this Agreement is governed by the laws of the State of New York. If purchased outside the United States, this agreement is governed by the laws of the country in which it was purchased.

If you have any questions concerning this Agreement, contact your local KODAK representative.

U.S. Government Restricted Rights

The SOFTWARE and documentation are provided with RESTRICTED RIGHTS. Use, duplication, or disclosure by the Government is subject to restrictions as set forth in subdivision (b)(3)(ii) of the Rights in Technical Data and Computer Software clause 252.227-7013. Contractor/manufacture is Eastman Kodak Company, 343 State Street, Rochester, New York, 14650.

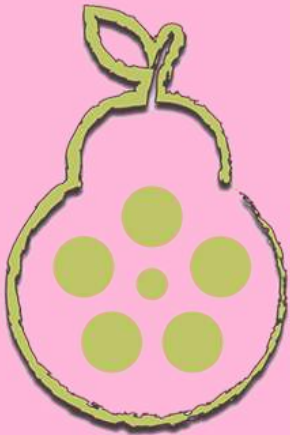
European Community Provisions

If this Software is used within a county of the European Community, nothing in this Agreement shall be construed as restricting any rights available under the European Community Software Directive, O.J. Eur. Comm. (No. L. 122) 42 (1991).

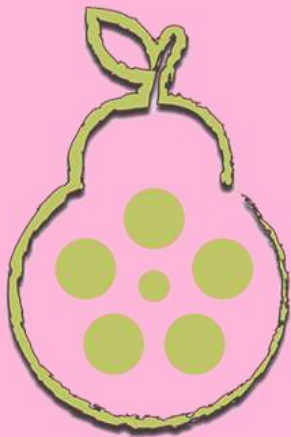
**Document Imaging
EASTMAN KODAK COMPANY
ROCHESTER, NEW YORK 14650**

Contents

1 Introduction	1-1
About this guide	1-1
Organization	1-1
What is <i>Kodak i9600</i> Application Software?	1-2
What you need to know	1-3
New in Version 3	1-3
Getting technical support	1-4
2 Installing the Software	2-1
System requirements	2-1
Film Writer hardware	2-1
PC hardware	2-1
Operating systems	2-2
Optional host application software	2-2
Installing the software	2-2
Defining units of measure	2-4
Starting the software	2-4
Exiting the software	2-4
3 Using the <i>Kodak i9600</i> Application Software	3-1
Creating your Reference Archive - overview	3-1
Toolbar	3-3
Job menu	3-4
<i>Kodak i9600</i> Application Software main window	3-4
Creating a new job	3-7
Multi-roll processing	3-9
Deleting a job from the queue	3-11
Viewing job settings	3-12
Running/stopping a job	3-13
Media menu	3-14
Advancing media	3-14
Run to end	3-14
Help menu	3-14



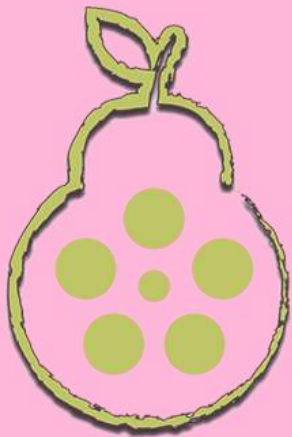
PDFKIWI



PDFKIWI

4 Administration Functions	4-1
Administration menu	4-2
The Writer dialog box	4-3
Settings tab	4-4
Information tab	4-5
Buttons on the Writers dialog box	4-5
Setting up a Writer	4-6
Modifying a Writer	4-7
Deleting a Writer	4-7
Job Types dialog box	4-8
Input tab	4-9
Output tab	4-12
Image Address tab	4-15
Examples of scaling and image orientation on media	4-20
Advanced Job Type settings dialog box	4-21
Audit Pages tab	4-21
Reporting tab and Transfer pages	4-23
Media tab	4-25
Creating a job type	4-29
Modifying a job type	4-30
Deleting a job type	4-30
Viewing jobs in the system	4-31
System settings	4-32
Setting system values	4-35
5 Troubleshooting	5-1
Setup problems	5-3
Error log	5-4
Writer errors	5-18
Appendix A Input Methods	A-1
Batch	A-1
List file	A-3
Creating a List file	A-4
Examples	A-5
Poll mode	A-24
Appendix B Using the Input Processor Software	B-1
Overview	B-1
The Input Processor window	B-2
Buttons on the Input Processor window	B-5
Using the Input Processor	B-7
Using the Input Processor for conversion of non-TIFF images	B-10
Appendix C Glossary	C-1

Appendix D Grouping, Image Addresses and Image Marks	D-1
Grouping	D-3
Appendix E Image File Specifications	E-1
TIFF file format	E-1
TIFF input file specifications	E-1
TIFF compression types supported	E-2
Using JBIG compressed files	E-2
Restrictions for JBIG compression	E-3
TIFF maximum file sizes	E-3
Blank TIFF image (blank.tif)	E-3
Text input file specifications	E-4
Image file names	E-4
Appendix F Archiving Non-TIFF File	F-1
Non-TIFF input files	F-1
Monitoring the progress of a non-TIFF archiving job	F-1



PDFKIWI

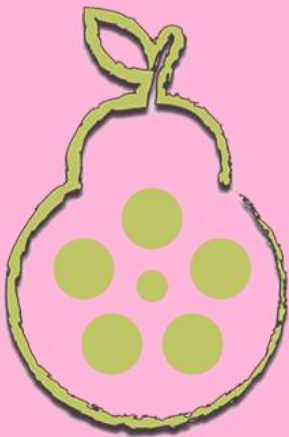
1 Introduction

About this guide

The *Kodak i9600* Application Software provides a high-level interface to the *Kodak i9600 Series Writers* and *Kodak Imagemark Document Archive Writer 4800*. It also provides a set of functions for administrative tasks involved in using the software.

The *Kodak i9600* Application Software provides menu options and toolbar buttons to help you use the software. In most cases, toolbar buttons are provided to do the same function as a menu option. For the purpose of this manual, procedures are provided using the menu options. If using the toolbar buttons is easier for you, click the toolbar button to perform the action instead of selecting a menu option.

Organization



In addition to this chapter, this User's Guide is organized as follows:

Chapter 2, *Installing the Software*: Provides hardware and software system requirements, instructions for installing the application software and how to start and exit the software.

Chapter 3, *Using the Software*: Describes each window you can access from the Jobs and Media menu, including explanations of each field as well as procedures on how to run a job.

Chapter 4, *Administrative Functions*: Describes each window you can access from the Administration menu, including explanations of each field as well as procedures on how to set up Writers and job types. This chapter also provides information about system settings.

Chapter 5, *Troubleshooting*: Describes problems you may encounter while using the *Kodak i9600* Application Software and provides a list of error codes.

Appendix A, *Input Methods*: Provides detailed information and examples regarding List files and Batch mode as well as information on how to create a List file.

Appendix B, *Using the Input Processor*: Provides information about the Input Processor and how to use it.

Appendix C, *Glossary*: Provides a listing of terms associated with the Writer and the application software.

Appendix D, *Grouping, Image Addresses and Image Marks*.

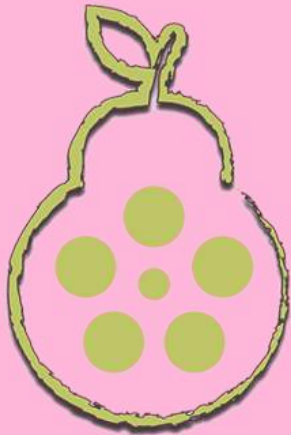
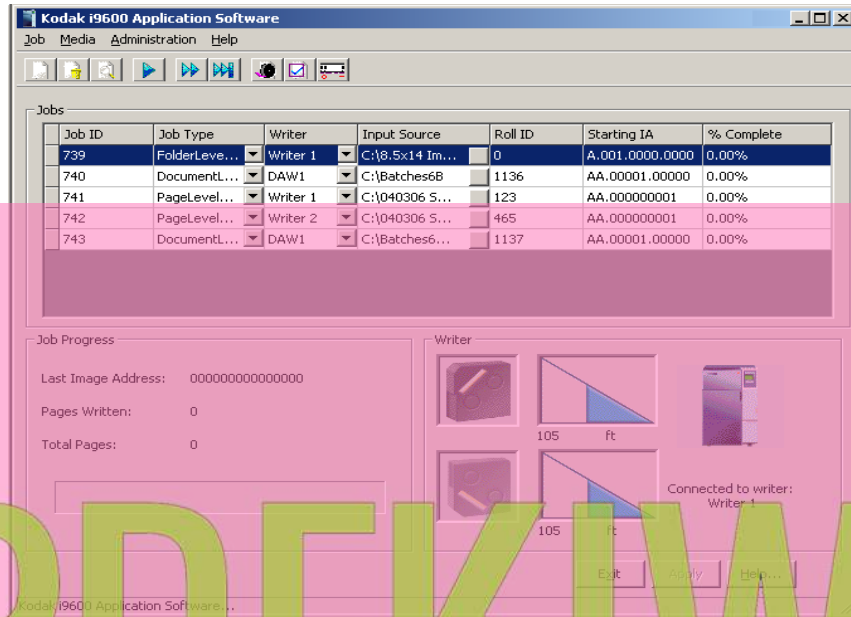
Appendix E, *Image File Specifications*: Details the specifications of the digital image files to be written to media.

Appendix F, *Archiving Non-TIFF Files*: Provides information about determining how non-TIFF files will be formatted for output and monitoring the progress of a non-TIFF archiving job.

What is Kodak i9600 Application Software?

The *Kodak i9600 Application Software* is a Microsoft Windows application that provides a fully functional interface to the *Kodak i9600 Series Writer* and *Kodak Imagemark Document Archive Writer 4800*. This software and hardware allow the conversion of electronic images (TIFF/JPG/BMP) and data files (PDF-A/PDF, Microsoft Word, PowerPoint and text) to 16 mm microfilm for long-term archival.

The *Kodak i9600 Application Software* main window provides access to the following menu options:



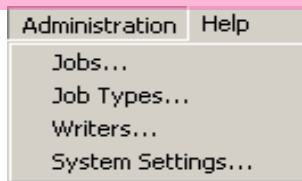
PDFKIWI



Job menu: Allows you to create or delete a job, run and stop jobs and view the current job settings. See Chapter 3, *Using the Software*, for more information.

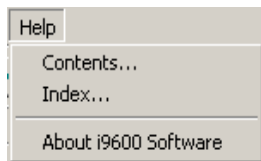


Media menu: Allows you to specify an amount of media (in inches or meters) for the media to be advanced. See Chapter 3, *Using the Software*, for more information.



Administration menu: Use the Administration menu to set up a Writer and a new job type. You can also use the Job Type function to modify or delete existing job types. The System Settings function allows you to set or change system settings. See Chapter 4, *Administration Functions*, for

more information.



Help menu: Provides on-line help for the *Kodak i9600 Application Software*. See Chapter 3, *Using the Software*, for more information.

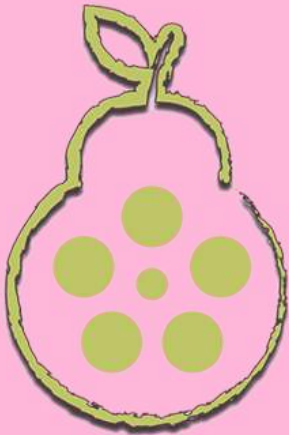
What you need to know

Users of the i9600 Application Software must understand the Microsoft Windows operating system, including basic Windows terms and functions, and the basics of microfilm technology, and image addressing.

For Windows, you must understand the following concepts. If you are not familiar with these terms, it is recommended you use the manuals accompanying your Windows software.

Button	Icon
Click	Mouse
Close	Single-click
Dialog box	Pull-down menu
Double-click	Shift-click
Drop-down list	Single-click
Navigating through Help files	

New in Version 3



The following is new for *Kodak i9600 Application Software, Version 3*:

- Support for PDF/PDF-A file formats
- Support for Microsoft Word and PowerPoint file formats
- Support for JPG and BMP file formats
- Support for Windows Vista and Windows 7

Support added — with Version 3 of the *Kodak i9600 Application Software*, inline support has been added to the above-mentioned non-TIFF formats allowing archival records to be sent directly to microfilm without manual conversion to a Writer-compatible TIFF file format before archival. Multi-bit files such as PDF and JPEG are converted to dithered black and white images.

Input Processor updated — the Input Processor utility has also been updated allowing you to pre-master your microfilm rolls to a TIFF file format before sending your records to microfilm.

Updated Installation Instructions — the archival of non-image file types (PDF-A/PDF/Microsoft Word/Microsoft PowerPoint) requires that the native host application be available from the host PC. Be sure to review the updated installation instructions in Chapter 2, *Installing the Software*.

Updated User's Guide information — several sections of this User's Guide have been updated with information about getting the best images from your non-TIFF files. Be sure to review the new Appendix F, *Archiving Non-TIFF Files*.

Getting technical support

Read this section before contacting Kodak for technical support.

The following information is needed when contacting Kodak technical support for the *Kodak i9600 Application Software*. This procedure is current as of the date of this guide, but it may change without notice as conditions require.

Response Center assistance is available as part of the Service Agreement. Refer to the Service Agreement Terms and Conditions for hours of availability.

Only a trained System Administrator should place the call to the Kodak Response Center. The following items will be requested:

- A K-number, located on the right side of the Writer, identifies the *Kodak i9600 Series Writer*.
- A brief description of the question or problem.
- A contact name and phone number where the contact/customer can be reached.

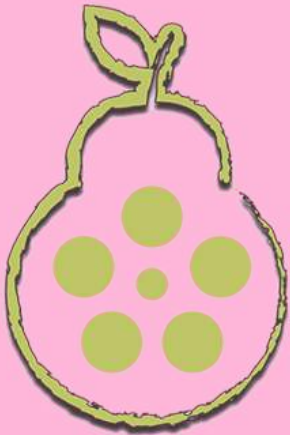
Phone numbers:

U.S. and Canada: 1-800-822-1414

International: 1-585-724-4675

The contact's name and phone number will be taken by a Response Center operator. A Response Center System Support Engineer will return the call.

The goal is to answer inquiries on the first call. However, depending on the complexity of the question, it may be necessary to confer with other technical resources. Therefore, the inquiry may require follow-up contact.



PDFKIWI

2 Installing the Software

System requirements

The following minimum hardware and software requirements are required to run the *Kodak i9600 Application Software*.

NOTE: Each Writer requires a dedicated host PC.

Film Writer hardware

- *Kodak i9610 and i9620 Archive Writer*
- *Kodak Digital Science Document Archive Writer 4800*

PC hardware

Minimum PC Hardware Requirements:

Not recommended for archiving non-TIFF files.

- Single-core 850 MHz Pentium IV processor
- 512 MB RAM
- At least 80 Gigabytes (GB) hard drive or enough space to hold the desired number of image files. It is recommended that the hard drive is at least 2 ½ times the size of the largest job you are running.
- CD ROM drive
- Monitor, keyboard, mouse
- Ethernet adapter compatible with IEEE 802.3 Ethernet. 3Com EtherLink III has been tested and is recommended for interfacing with the Writer (only supports 10 mb)
- Cabling from PC to Writer (cross-over cable if directly connected)

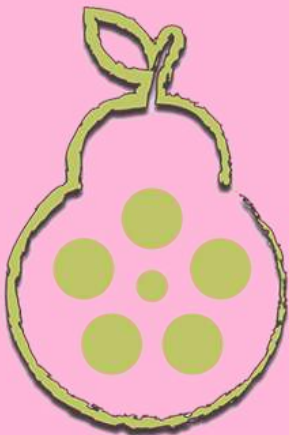
NOTE: If using the Input Processor to transform your images (i.e., convert or rotate) a faster processor, RAM disk and more disk space is recommended.

Recommended PC Hardware Requirements:

Recommended for archiving or conversion of non-TIFF input files.

- Dual-core 2.0 GHz (or faster) processor
- 2 GB (or more) RAM
- At least 250 Gigabytes (GB) 7200 rpm hard drive or enough space to hold the desired number of image files. It is recommended that the hard drive is at least 2 ½ times the size of the largest job you are running.
- CD ROM drive
- Monitor, keyboard, mouse
- Ethernet adapter compatible with IEEE 802.3 Ethernet. 3Com EtherLink III has been tested and is recommended for interfacing with the Writer (only supports 10 mb)
- Cabling from PC to Writer (cross-over cable if directly connected)

NOTE: If using the Input Processor to transform your images (i.e., convert or rotate) a faster processor, RAM disk and more disk space is recommended.



PDFKIWI